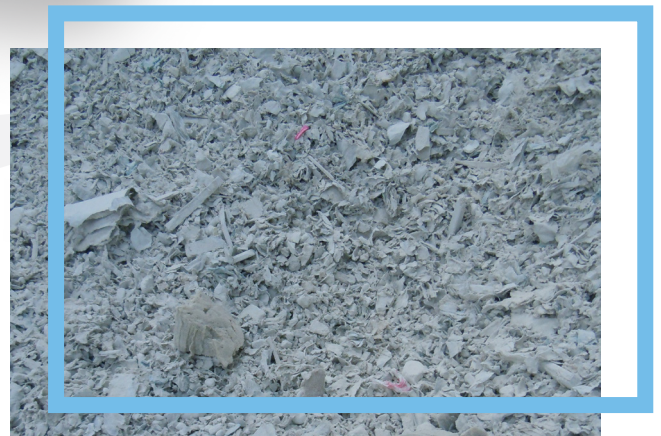
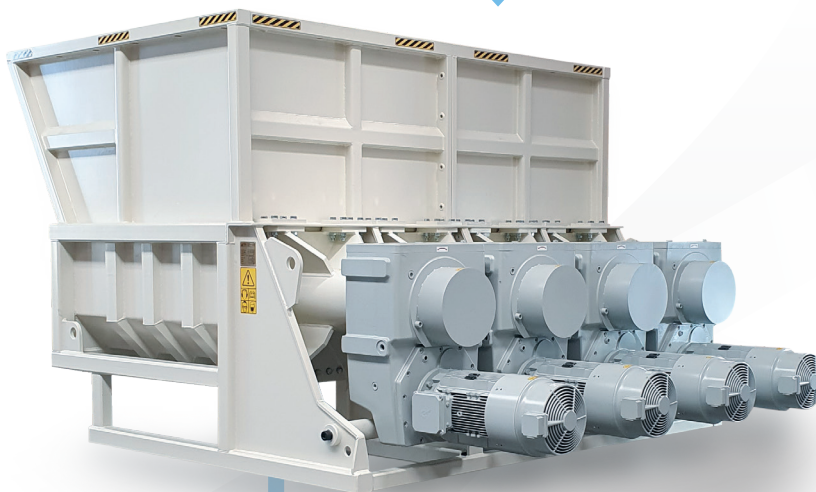


# ACTA

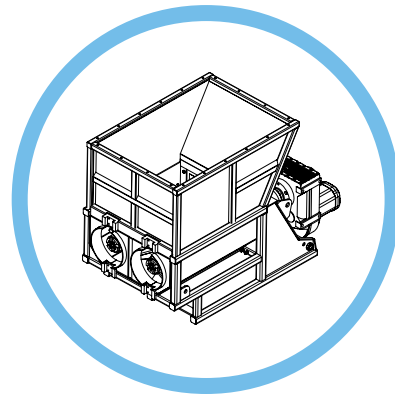
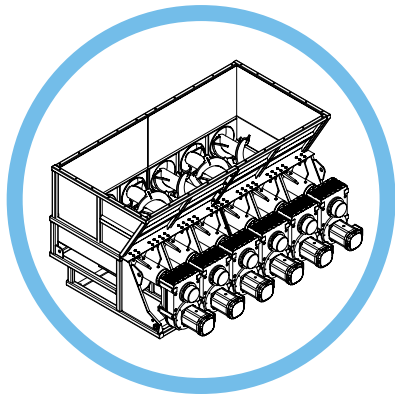
## A solution for gypsum

### GYPSUM – OPTIMAL RECYCLING

For centuries, we have mined and utilized gypsum for various purposes. Today, hardly a single house is built without plaster, such as plasterboard for walls and ceilings. In theory, gypsum can be broken down and recycled indefinitely. Construction waste such as plasterboard and gypsum scrap may thus be recycled throughout the construction process. Moreover, plasterboard from demolition projects can usually be recycled and used in the production of new plasterboard.



The ACTA machine is filled with plasterboard and plaster scraps. The shredder breaks down the material into smaller pieces before further processing.



## A FLEXIBLE AND EFFICIENT SOLUTION

The ACTA crusher solves the problem. Simply fill the hopper with plasterboard and/or gypsum scrap, and the crusher will do the rest. The paper from the plasterboard will separate from the plaster. The size of the crushed material may be

adjusted accordingly. For example, it is possible to install a disk with a custom size hole, which will shape the crushed material depending on the requirements for further processing.

TECHNICAL DATA		AR-2	AR-4	AR-6
<b>DIMENSIONS</b>	Height	2253 mm	2253 mm	2253 mm
	Length	3364 mm	3364 mm	3364 mm
	Width	1630 mm	3030 mm	4430 mm
	Hopper volume	3,5 m <sup>3</sup>	6,5 m <sup>3</sup>	10 m <sup>3</sup>
	Total weight	6.200 kg	11.500 kg	16.500 kg
<b>CAPACITIES</b>	Depending on density of the material/bales	Approx. 2-4 T/h	Approx. 4-6 T/h	Approx. 6-8 T/h
<b>ROTOR</b>	Number	2	4	6
	Length	1600 mm	1600 mm	1600 mm
	Diameter	500 mm	500 mm	500 mm
	RPM/Torque pr screw	12rpm/15.000 Nm	12rpm/15.000 Nm	12rpm/15.000 Nm
	Material	Steel	Steel	Steel
<b>GEARMOTOR</b>	Number	2	4	6
	Electrical data	18,5 kW, 400 V	18,5 kW, 400 V	18,5 kW, 400 V
	Connection	50 Hz, 58 Amp	50 Hz, 58 Amp	50 Hz, 58 Amp