



Cylindrical screw flight Ø750- Ø1000 - 34902



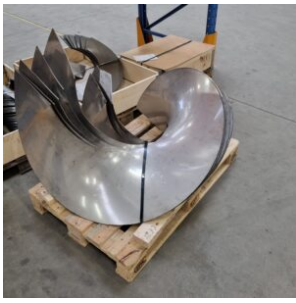
Specifications

Cylindrical screw flight Ø750-Ø1000 - 34902

- Used material: Stainless steel 1.4301-AISI-304
 - Outer diameter: Ø750 - Ø1000
- See similar screw flight

Additional Information:

Applied steel in product:	Stainless steel
Product type:	Screw flight
Surface treatment:	Stainless steel – acid pickled



Cylindrical screw flight Ø750- Ø1000 - 34902



Short Description

Cylindrical screw flight Ø750-Ø1000 – 34902

The screw flights are manufactured in stainless steel. Cylindrical screw flights are the most common sectional screw flight.

What is important for a cylindrical screw flight?

- The screw shall have a uniform increasing pitch
- It shall be perpendicular to the next cylindrical screw flight
- It shall be easy to mount on the inner pipe

If you want to evaluate the price on cylindrical flights kindly take the following into consideration:

1. Is the cylindrical screw flight fast to mount to the inner pipe
2. What is the time used for mounting?
3. What is the time used for welding and straightening afterwards

Cylindrical screw flights of poor quality takes much more time to mount and to weld. Specially screw flights in stainless steel require to be precise with a stable quality.